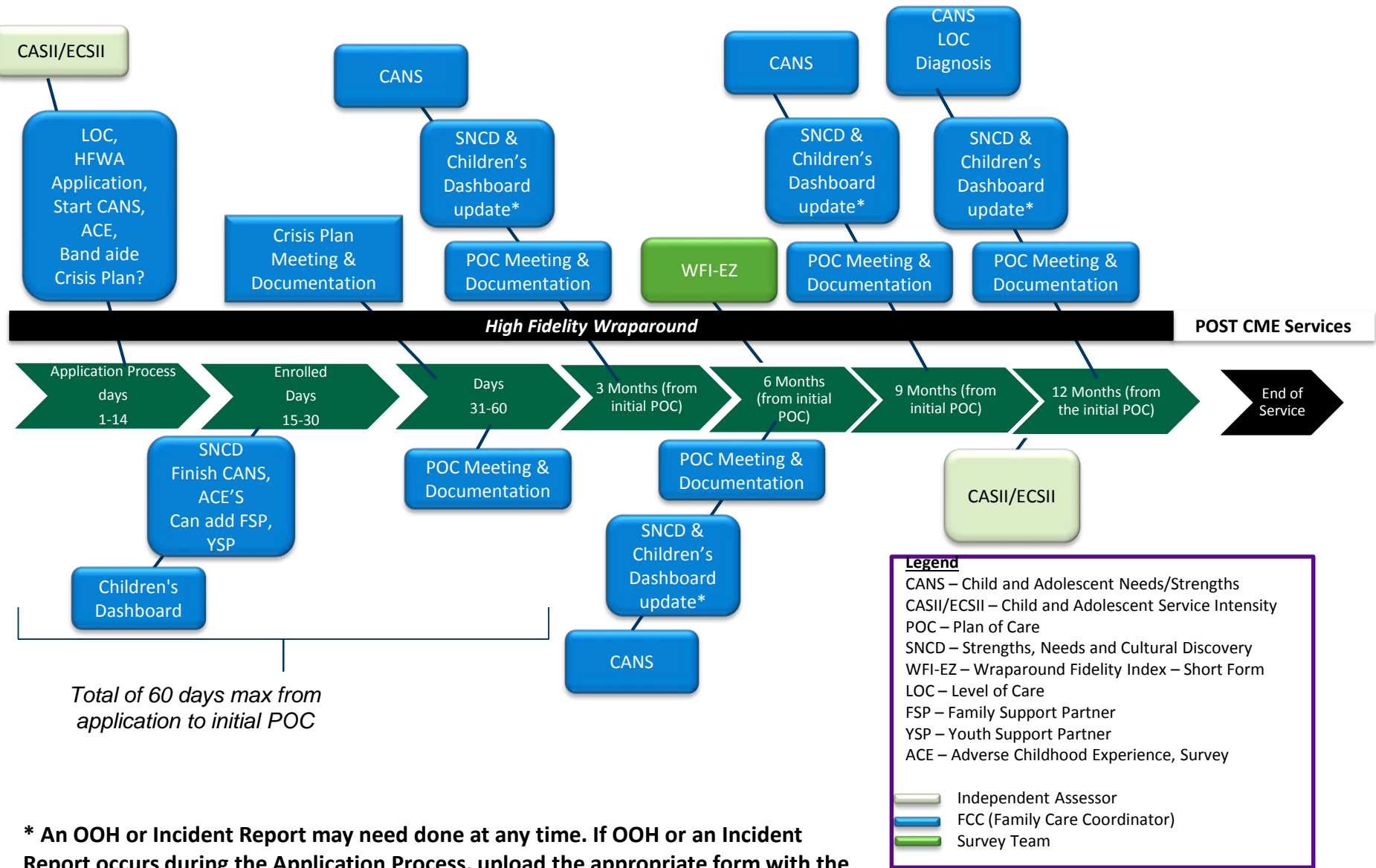


# Provider Requirements & Timeline October 2017

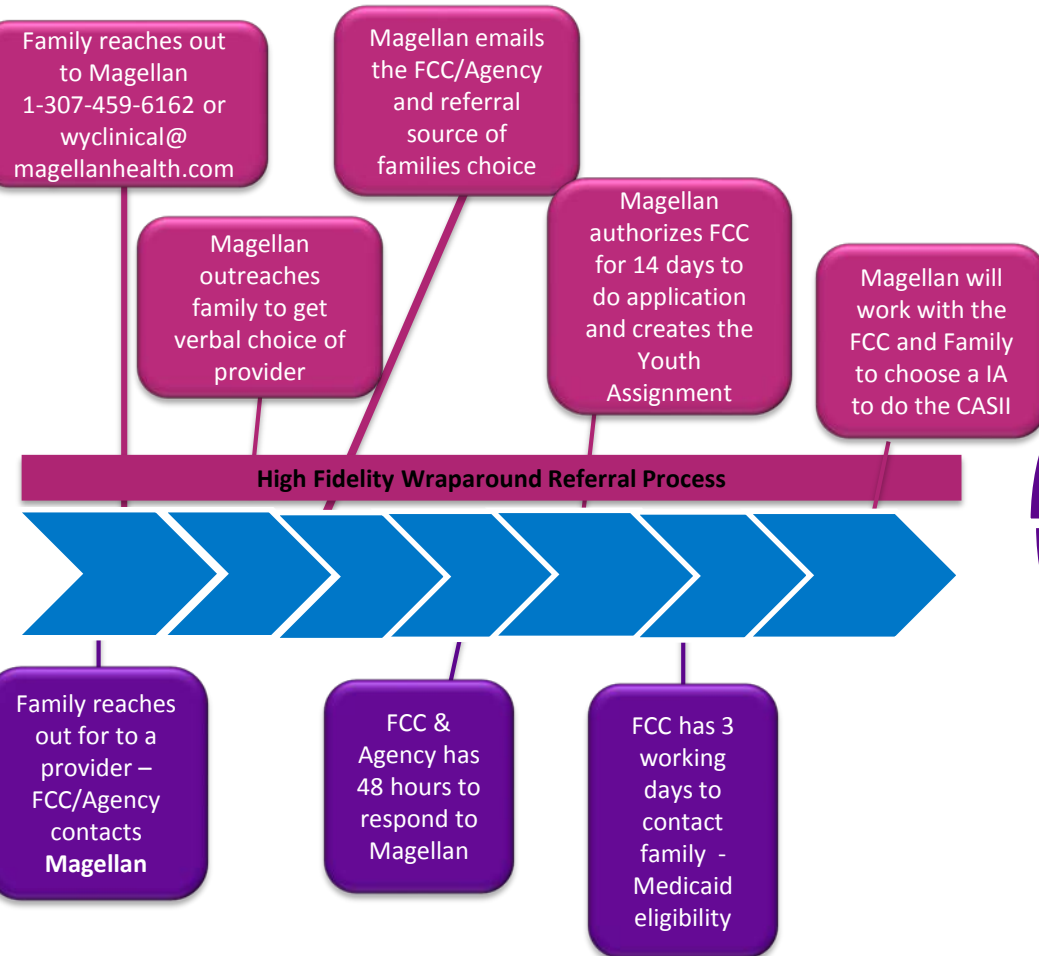


Total of 60 days max from application to initial POC

\* An OOH or Incident Report may need done at any time. If OOH or an Incident Report occurs during the Application Process, upload the appropriate form with the

# Application Process

- Referral



- Paperwork

**Legend**  
See Previous Slide

- Magellan
- FCC (Family Care Coordinator)
- Independent Assessor

